

Martin® Idler Aligner



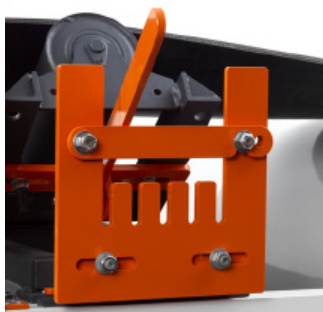
The Martin® Idler Aligner provides a safe and effective method to manually fine tune OEM-style self-adjusting idlers.

The handle and comb allow for coarse adjustment, while slots allow for finer tuning.

Eliminates the need to tie off idlers to surrounding structures.

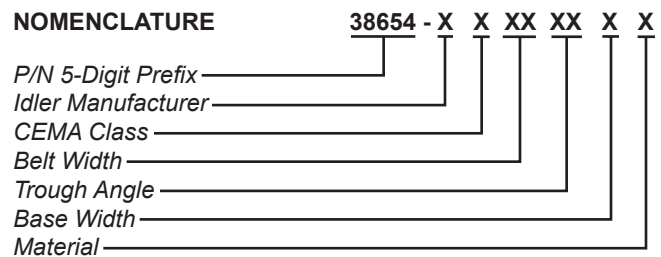


Fixed Position



Free-floating Position

NOMENCLATURE



IDLER MANUFACTURER

- P: PPI
- C: Continental Conveyor

CEMA CLASS

- C: CEMA Class C for PPI Idler
- D: CEMA Class D for PPI Idler;
- CEMA Class C & D for Continental Conveyor Idler

BASE WIDTH

- S: Standard Base Width
- W: Wide Base Width

Material

- P: Painted Mild Steel
- C: 304 Stainless Steel
- S: 316 Stainless Steel